

Deep Learning Approaches for Pulmonary Nodule Classification: A CNN Algorithm for Enhanced

Dr. Rafik Ahmed

Associate Professor, Kanpur University, INDIA.



www.sjmars.com || Vol. 2 No. 2 (2023): April Issue

Date of Submission: 02-04-2023

Date of Acceptance: 16-04-2023

Date of Publication: 30-04-2023

ABSTRACT

For the purpose of making a preliminary diagnosis of lung cancer, computed tomography, or CT, is frequently utilized to find pulmonary nodules. However, as a result visual similarities among non-cancerous and cancerous nodules, identifying malignant from cancer nodules is not easy for doctors to accomplish. Here, a novel Convolution Neural Network architecture known as ConvNet is suggested to classify lung nodules as malignant or benign. A multi-scale, multi-path architecture is developed and utilized to increase the classification performance. This is done since there is a large variance in the nodule characteristics that are displayed in CT scan images, like Shape and Size. The multiple scale method makes use of filters of varying sizes to extract nodule features from local regions in a more efficient manner, and the multiple path architecture combines features extracted from various Convolution Network layers in order to improve the nodule features in relation to global regions. Both of these methods are part of the multi-path architecture. The LUNGx Challenge database is used to train and assess the proposed ConvNet, and it obtains specificity of 0.924, sensitivity of 0.887, and AUC of 0.948. The suggested Convolution Network is able to obtain an AUC improvement that is 14 percent higher than the current state-of-the-art unsupervised learning technique. The proposed Convolution Network also performs better than the previous state-of-the-art Convolution Networks that were specifically created for the categorization of pulmonary nodules. The suggested Convolution Networks has the potential to aid radiologists in making diagnostic judgments during CT screening when it is utilized in clinical settings.

Keywords- CT-Scans, CNN, Deep Learning, Lung Nodule Detection.

I. INTRODUCTION

The most common type of cancer that results in mortality is lung cancer, as indicated by the statistics that were compiled and released by the American Cancer Society (2017). The ability to detect and diagnose cancer at an earlier stage is one of the most crucial factors in determining whether or not a patient will survive their illness. Computed tomography, sometimes known as CT, is frequently utilized by radiologists in the process of diagnosing lung cancer.

CAD tools have been created to help radiologists differentiate between cancerous and non-cancerous nodules in patients' chests. In general, these CADx systems use a classifier to transform the properties of the nodule into conclusions regarding whether or not the nodule is benign or cancerous. As a result of the fact that the CADx system helps radiologists achieve a higher level of diagnostic accuracy, it is an excellent option for performing preliminary diagnoses. Low-level features of medical imaging are used by early established CADx systems. Contour, size, and form are features image structures in the images. Because pulmonary nodules come in a wide variety of sizes and forms, as shown in Fig. 1, our techniques demonstrate that low-level traits can be beneficial for classifying pulmonary nodules.

Unsupervised learning strategies, on the other hand, call for the manual extraction of features, which makes it difficult to determine which combination of features is best (Anthimopoulos et al.). DL has seen a significant deal of success in recent years, particularly in the areas of picture objective detection, classification, NLP and many more. Deep neural networks, often known as DNNs, are capable of approaching human levels of performance in several of these areas (Silver et al. 2016).

In a traditional ConvNet, the early layers are responsible for the generation of global structures. When one reaches deeper layers, one begins to encounter increasingly complex local systems. A conventional ConvNet typically consists of a single path and is limited to making use of the local structures while performing classification. On the other hand, in the classification of pulmonary nodules, merging local and global structures by way of a skip connection is anticipated to increase the classification performance. Additionally, the traditional Convolution Network only uses a single-scale filter when it comes to the feature extraction process. On the other hand, because the sizes of the nodules might vary, it may be possible to obtain more accurate nodule features by conducting nodule image analysis using multi-scale filters.

An unique CNN architecture is suggested with the goal of satisfying the demand for better pulmonary nodule classification. The suggested ConvNet makes use of a multiple path feature extraction strategy in order to maintain the integrity of both the local and the global structures. In addition, the suggested ConvNet makes use of multi-scale convolutional layers, which include the application of numerous filters of varying sizes, in order to cover a greater number of useful nodule properties. The suggested ConvNet achieves a 14 percent improvement in an area under the ROC curves when compared to the approach (Nishio and Nagashima 2017). This is in comparison to the previous approach (AUC).

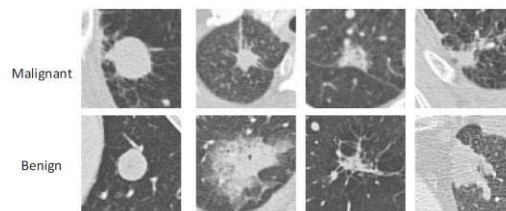


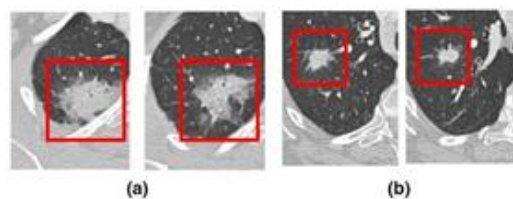
Fig 1. The definition of pulmonary nodules with examples. The nodules can be found in the middle of the image boxes that are 80mm by 80mm. These examples show that classifying pulmonary nodules can be difficult due to the wide range of sizes, forms, and comparable visual representations shared by malignant and benign nodules.

II. DATASETS

Contains the CT scans of seventy patients, and the overall collection has 83 pulmonary nodules, of which 41 are malignant and 42 are benign. Each CT scan included in the LUNGx Challenge database was acquired with a tube peak potential energy of either 120kV or 140kV, with a tube current-exposure time product of between 200 and 325 mAs.

The Computed Tomography scans are reconstructed DICOM files, which contain a variety of 2D slice images. The size of each slice image is 512 pixels by 512 pixels, and the slice thickness is 1 millimeter.

In Figure 2, a selection of the bounding boxes are depicted as red rectangles for your viewing pleasure. (3) The nodule patches are retrieved by cropping the slice images in a way that respects the bounding boxes. Different patches obtained the same nodules had distinct visual manifestations, as seen in Figure 2 (see also Fig. 1).



In order for ConvNets to attain good classification performance, they require a substantial dataset on which to train their vast number of learnable parameters. For instance, there are 1.2 million training photos in the ImageNet database, which was used to train AlexNet. According to what was covered in Section 2, the LUNGx Challenge database only has 1131 nodule patches retrieved from it. When there is a finite amount of data, the trained network is unable to model the training data accurately nor can it generalise its performance to make accurate predictions for new data. In most cases, a data augmentation strategy is utilised in order to accomplish the goal of increasing the total number of training photos.

In this paper, the data augmentation involves several techniques by randomly selecting image flipping, image rotation and image translation. The goal of this is to achieve a unique spatial variance for each enhanced nodule patch. The rotation is accomplished by rotating the nodule patches at an arbitrary angle that ranges from 0 to 359 degrees.

The orientation of the nodule patches in either the vertical or horizontal plane is arbitrary. The translation causes a haphazard movement of the nodules closer to the boundaries of the bounding boxes. As can be seen in Figure 3b, the initial bounding box must be expanded by twenty percent in order for translation to be performed.

2.1. Data augmentation

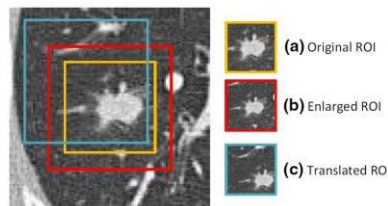


Fig.3. A visual representation of the translating process.

A. Nodule patch that was removed according to the original bounding box. B. The extracted nodule patch twice the original. C. Nodule patch translation

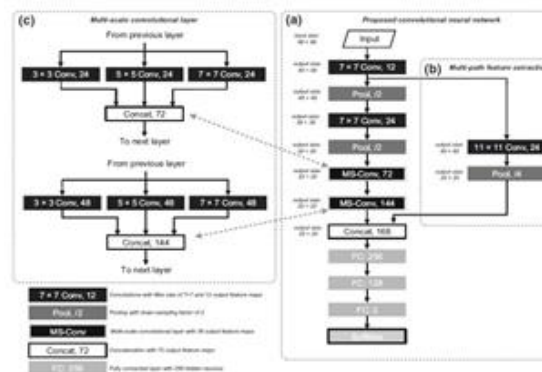
2.2. Image Normalization and Contrasting

When applying the contrast normalization technique, the global mean is subtracted from each pixel in each image before applying the technique. The intensities of all pixels are averaged in order to calculate the global mean. This is accomplished by first adding up the intensities of all pixels in all of the photos, then dividing this total by the total number of images. The performance of the ConvNet may be negatively impacted when a big gradient is present since this may force the network to converge toward a local minimum.

III. PROPOSED CONVOLUTION NETWORK

The suggested ConvNet utilizes two strategies that have been developed in order to increase classification performance:

(1) The Multiple path Feature Extraction creates one extra path to combine features from other layers and later layers preserve from loss of features. (2) In order to provide multi- scale features, the traditional conv. layer is removed and replaced with the proposed multiple scale Conv. layer. The multi-scale conv. layer makes use of numerous filters of varying sizes.



3.1. Architecture

The Figure 4a depicts architecture that would be used for the proposed ConvNet. The suggested ConvNet has a size of input that is 96*96. Two feed-forward routes are included in the proposed ConvNet design. The main path is responsible for performing multiple scale for extraction of features, and its fundamental structure is founded on the hierarchical neural network. The main path's fundamental structure is made up of four consecutive single-scale convolutional layers, which are then followed by three fully connected layers. On the other hand, the second path is the one that is utilized for multi-path feature extraction. This is accomplished by establishing a direct connection between the first single-scale conv. layer and the first FC layer along the main path. In relation to the primary path, the multiple scale extraction of features occurs after the two conv. layers that are only of the single-scale variety. In the 1st single-scale convolutional layer, a convolution operation with a size of 7*7 is carried out in order to obtain 12 output feature maps.

In a similar manner, the second single-scale convolutional layer generates 24 output layer feature maps by utilizing the same filter size. Then, after this, there are two multi- scale convolutional layers that come after this. In the end, the two different routes will be combined and linked to the initial layer that will be entirely connected.

Following the completion of three layers that are FC, the final output features are analyzed in order to divide pulmonary nodules into two categories: benign and malignant. There are 256 neurons that are concealed in the first layer that is fully linked. In order to match the number of output classes, the last fully connected layer has only two hidden neurons,

whereas the second fully connected layer contains 128 hidden neurons. After the last layer that is completely connected, the results that were predicted are normalized using SoftMax (Bishop 2006).

The activation function of each convolutional layer is the ReLU layer, which stands for the "rectified linear unit." Positive values are maintained while negative ones are truncated to zero by the ReLU. In comparison to the sigmoid function and the tanh function, the ReLU exhibits significantly more favorable gradient changes (Krizhevsky et al. 2012). In addition, it is simple to apply, which makes it an effective tool for enhancing the speed performance of the network during both training and inference.

Following each layer of convolutional processing, a max- pooling layer is added. In order to preserve more pertinent local structures, the max-pooling layers of the network are utilized to lower the spatial resolution of the layers that immediately follow them in the hierarchy. In addition, the pooling process expands the extent of the receptive field, which enables the network to acquire a greater understanding of intricate regional patterns based on the input.

3.1.1. Multiple path extraction of features

The traditional ConvNet has a direct route for passing extracted features into the fully connected levels of the network. The earlier layers of a typical ConvNet are responsible for the feature extraction in relation to global structure. When the ConvNet is allowed to propagate to deeper layers, the previously extracted features become less dense and more locally concentrated, while the previously extracted global structures become less prominent. The performance of the traditional ConvNet may be limited in the study of the pulmonary nodules, despite the fact that it is well-suited to extract features that describe local structures. Local structures have a lower capacity to represent such low-level information as compared to global structures. This is due to the fact that the visual representations of pulmonary nodules come in a variety of different shapes and sizes.

The multi-path feature extraction that has been offered is a short-cut solution to the problem of lost global structures. The output of the first conv. layer is split in two by the shortcut, which also establishes a skip connection to the first FC layer, as can be seen in Figure 4b. A maximum PL is put into the shortcut in order to blend the characteristics that come from two different branches. Combination of both local and global structures because they were created by passing the features of the early layer into the first FC layer. As a result, it is anticipated that the final combined features will provide more nodule features.

3.1.2. Multiple Scale convolution layer

A simplistic approach to enhancing the performance of a ConvNet is to add more convolutional layers to the network, hence increasing its depth. Due to the limited size of the dataset, this strategy would result in overfitting. Convolution requires careful consideration when selecting an appropriate filter size. This can be challenging. Choosing the appropriate filter size can considerably increase diagnostic accuracy when pulmonary nodule categorization is being performed. A multiple scale conv. layer is offered as a means of improving the extraction of local sparse structures with regard to various receptive fields in this particular piece of research. The filter bank in the multiple scale conv. layer is constructed with 3 different filter sizes as opposed to utilizing a single-scale filter. Figure 4c illustrates the configurational specifics of the multiple scale conv. layer in its entirety.

There are three different branches that make up the multiple scale conv. layer. The first branch carries out an operation known as a 3*3 convolution. By utilizing a 5*5 convolutional layer, the second branch of the tree is able to accomplish its goal of extracting comparatively larger local structures. The final branch also consists of one conv. layer, but the size of the filter has been increased to 7*7 in order to take into account a greater number of local structures. A depth-wise concatenation is used to combine the feature maps that were produced by three different branches. In order to carry out an efficient concatenation, the input of the 3*3 conv. layer is padded with a 1*1 border of zeros, while the inputs of the 5*5 and 7*7 convolutional layers, respectively, employ zero paddings of 2 or 3, depending on which layer they are.

The ConvNet that has been proposed features an extension of a single-scale conv. layer to a multiple scale conv. layer. This provides the network with the ability to produce more local structures of varied sizes.

3.2. Training of model and result evaluation

The suggested Convolution Network is evaluated and trained Network using 5-fold cross validation, in order to pick a trained model with strong generalization. Each fold has benign and malignant nodules with 10% each, with a total of 41 and 42, respectively. In every iteration of the cross-validation procedure, 3 folds are set aside for training, whereas only one-fold is allocated for validation and one-fold is used for testing. The augmentation is done while the data set is still being used for training. When calculating overall performance, an average is taken of the accuracies, sensitivities, and specificities obtained from each of the 5 cross-validation folds.

Class imbalance may have a negative impact on training convergence and the generalization of the trained model due to the fact that the enhanced nodule patches contain a greater number of malignant samples than benign ones (Mazurowski et al. 2008). Over-sampling the minority group is one of the most prevalent solutions to the problem of imbalance, and research has shown that doing so leads to improved performance in deep learning. The proposed training and validation datasets are subjected to over-sampling so that they are more evenly distributed. This is accomplished by randomly selecting and duplicating benign nodule patches.

IV. ANALYSIS OF RESULTS

4.1. Experimental Setup

Caffe, a framework for deep learning developed by Jia et al. (2014), is used to implement the suggested ConvNet. The Caffe environment is often used for the implementation of other research involving convolutional neural networks. Training and testing of the network is carried out on a computer running Ubuntu 16.04 Linux

4.2. Proposed Convolution Network Algorithm Analysis

4.2.1. Hyper-parameter Tunning

A variety of experiments are carried out in order to provide evidence in support of the decisions made regarding the proposed ConvNet input scale, no. of hidden neurons in the FC layers, and training settings. Table 1 provides a concise summary of the findings. The accuracy of the categorization decreased by approximately 1.5% when moving from 96*96 to 128*128 on the input scale. When the input scale is decreased to 64 by 64, there is a 4% decrease in accuracy. Additionally, when the no. of hidden neurons in the FC layers is either doubled or halved, the classification accuracies that are produced are inferior to those that were proposed. If the dropout technique is not implemented, the proposed ConvNet displays an accuracy that is around 1.5% lower. In addition, there is a noticeable gain in accuracy when the batch size is increased from 96 to 128, which is around 0.5 percent.

Table 1. Accuracy of classification achieved by the proposed ConvNet using various settings for its hyper- parameters.

Input scale	FC layer factor	Dropout ratio	Batch size	Weight initialization	Accuracy (%)
64	1	0.5	128	0.01	86.60
128	1	0.5	128	0.01	88.77
96	1/2	0.5	128	0.01	89.17
96	2	0.5	128	0.01	87.61
96	1	0	128	0.01	88.50
96	1	0.5	96	0.01	89.93
96	1	0.5	128	0.005	89.28
96	1	0.5	128	0.05	88.50
96	1	0.5	128	0.01	90.38

Italics represents the changed hyper-parameters.
 Bold represents the best configuration of hyper-parameters

4.2.2. Multiple Path Feature Extraction Analysis

The performance of the multiple path feature extraction is examined by comparing the classification performances of the proposed ConvNet with and without the shortcut. This is done in order to evaluate the effectiveness of the multi path feature extraction. The short cut raises the accuracy from 86.77 to 90.38 percent, the AUC from 0.914 to 0.948 percent, and adds to a 2 percent increase in sensitivity and a 6 percent increase in specificity. Table 2 presents these findings for your perusal. By establishing numerous branches simultaneously, an investigation is carried out to see how successful the suggested multi-path feature extraction is. Intuitively, each of the branches makes use of the identical input features and extracts those features using an independent convolution operation, which is then followed by maximum pooling.

As can be seen in Table 3, when branches are added to the proposed multi-path feature extraction method, the classification performance suffers as a result. In particular, the multi-path feature extraction performed using three branches has a worse classification performance compared to the one performed using two branches. In addition, the classification performance of a system that uses multi- scaled convolution filters (for example, "11*11, 13*13") is superior to that of a system that uses a fixed-scale convolution filter (for example, "11*11, 11*11") in terms of both accuracy and speed.

Table 2. Comparison of proposed Convolution Network accuracy in classifying data with and without the use of a shortcut

Network	Accuracy (%)	Sensitivity	Specificity	AUC
Proposed ConvNet without shortcut	86.77	0.869	0.863	0.914
Proposed ConvNet with shortcut	90.38	0.887	0.924	0.948

Bold represents the best performance among all compared methods

Table 3: Comparison of the classification abilities of the proposed multiple path feature extraction with a variety of filter configurations

Filter configuration	Accuracy (%)	Sensitivity	Specificity	AUC
(11 × 11)	90.38	0.887	0.924	0.948
(11 × 11, 11 × 11)	88.40	0.870	0.892	0.920
(11 × 11, 13 × 13)	88.79	0.877	0.901	0.938
(11 × 11, 15 × 15)	87.63	0.861	0.895	0.922
(11 × 11, 17 × 17)	86.34	0.847	0.884	0.916
(11 × 11, 19 × 19)	86.21	0.849	0.878	0.911
(11 × 11, 21 × 21)	85.18	0.833	0.875	0.910
(11 × 11, 11 × 11, 11 × 11)	87.11	0.866	0.878	0.914
(11 × 11, 13 × 13, 15 × 15)*	87.79	0.870	0.887	0.929
(11 × 11, 13 × 13, 17 × 17)	85.95	0.838	0.887	0.921

(11 × 11, 13 × 13, 15 × 15)*-Three branches' multi-path feature extraction with filter sizes of 11 × 11, 13 × 13 and 15 × 15
 Bold represents the top-1 values among all filter configurations.
 Italics represents the top-2 values among all filter configurations

4.3. Comparison with previous works

4.3.1. Comparison with Unsupervised feature learning approach

The suggested method is contrasted with Nishio's work, which is an approach to nodule-based unsupervised feature learning. The purpose of this comparison is to demonstrate that the proposed method is more effective than an unsupervised learning scheme. The research conducted by Nishio uses a combination of principal component analysis (PCA) and convolution operation in order to extract robust unsupervised features. According to the results of the nodule-based study, the suggested method performs better than Nishio's method (Specificity = 0.889, Sensitivity = 0.875, AUC = 0.958), as shown in Table 4. The unsupervised feature extraction that is detailed in Nishio's work is surpassed by the suggested method in two significant ways, which are as follows:

(1) The covariance matrix serves as the foundation for principal components. Because of the complexity of high-dimensional spaces, it is not possible to accurately evaluate the covariance matrix in a way that would allow it to offer adequate high-level characteristics. (2) The PCA approach does not have a particularly great ability to assess the differences in object placement (Li et al. 2008). During the testing phase of the PCA approach, it is possible for erroneous predictions to be generated when the nodules occur in different positions of the input images. On the other hand, the approaches that are based on ConvNet have a great ability to process the translational variance that is present in objects. The ability to extract features is improved as a result by the method that was proposed.

4.3.2. Comparison with other ConvNet approaches

These ConvNets include those that use single-scale convolutional layers (Li et al. 2014; Zhao et al. 2018), pre-trained AlexNet and GoogLeNet with transfer learning (Shin et al. 2016; Tajbakhsh et al. 2016), and multi-cropped ConvNets (Shen et al. 2017). The classification performance statistics of previous research are created by training and evaluating their ConvNets using the LUNGx Challenge database with identical data partitioning and evaluation scheme as used in the proposed architecture. This ensures that the results are comparable (as described in Sect. 3.2). The findings are presented in a nutshell in Table 5. When compared to other ConvNets, the suggested ConvNet has the highest levels of accuracy (90.38 percent), specificity (0.924), and AUC (0.948). The resultant sensitivity of the suggested ConvNet is 0.887, which is only 0.019 points lower than the sensitivity achieved by the model with the highest sensitivity, which was a pretrained GoogLeNet with transfer learning (Shin et al. 2016).

In addition to this, the performance of the proposed ConvNet is evaluated and contrasted with that of the multi-crop ConvNet (Shen et al. 2017), which crops feature maps in the direction of multi-scale feature learning. Using multi-crop ConvNet to extract patch-based data should also be legitimate, despite concerns that the multi-crop ConvNet is evaluated under nodule-based data. The aim is to crop the feature maps with varying sizes to boost the core nodule feature, regardless of the input shape. According to the findings presented in Table 5, the suggested ConvNet demonstrates superior accuracy as well as AUC in comparison to the multi-crop ConvNet. The suggested multi-scale convolutional layer does not crop the feature maps; rather, it uses many filters of varying sizes to produce more local structures. As a result, the central nodule features are also enhanced. On the other hand, the multi-path feature extraction that has been presented utilises the beneficial global structures to further improve the nodule features that correlate to the size or shape of the nodule.

Table 4. The suggested ConvNet is compared with an unsupervised feature learning approach.

	Method	Cross validation	ROC analysis	Sensitivity	Specificity	AUC
Nishio and Nagashima (2017)	Hisogram + SVM	10-fold	nodule-based	0.867	0.488	0.640
	LBP-TOP + SVM			0.900	0.558	0.688
	RLBP + SVM			0.800	0.674	0.725
	Multi-stages + SVM			0.867	0.744	0.837
Proposed	ConvNet	5-fold	nodule-based	0.875	0.889	0.958
			patch-based	0.887	0.924	0.948

Hisogram, histogram of CT density; LBP-TOP, local binary pattern on the three orthogonal planes; RLBP, LBP with 3D random sampling; Multi-stages, combination of PCA, convolution and pooling operations; SVM, support vector machine

Table 5 The suggested ConvNet is compared to several different ConvNet topologies that are stored in the LUNGx Challenge database.

	Methods	Accuracy (%)	Sensitivity	Specificity	AUC
Li et al. (2014)	ConvNet with 1 single-scale convolutional layer	80.15	0.789	0.818	0.854
Zhao et al. (2018)	ConvNet with 2 single-scale convolutional layers	84.97	0.843	0.858	0.902
Tajbakhsh et al. (2016)	Transfer learning on pre-trained AlexNet	80.58	0.821	0.787	0.855
Shin et al. (2016)	Transfer learning on pre-trained GoogLeNet	86.68	0.906	0.798	0.933
Shen et al. (2017)	Multi-cropped ConvNet	86.77	0.846	0.895	0.940
Proposed method	Multi-scale + multi-path	90.38	0.887	0.924	0.948

Bold represents the top-1 values among all ConvNets
Italics represents the top-2 values among all ConvNets

Figure 5 illustrates the ROCs for a variety of ConvNet designs. A statistical analysis, namely the significance level under the DeLong test (Efron 1993), is carried out in order to examine the statistical significance of the AUC differences that exist between the proposed ConvNet and other ConvNet techniques.

According to the findings of the DeLong test, the suggested ConvNet showed statistical significance ($p < 0.05$) in comparison to other ConvNet techniques, with the exception of pre-trained GoogLeNet (Shin et al. 2016) ($p=0.0509$) and multi-crop ConvNet. The suggested multi-scale convolutional layer does not crop the feature maps; rather, it uses many filters of varying sizes to produce more local structures. As a result, the central nodule features are also enhanced. On the other hand, the multi-path feature extraction that has been presented utilises the beneficial global structures to further improve the nodule features that correlate to the size or shape of the nodule.

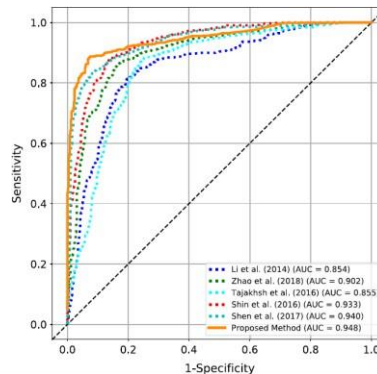


Fig. 5. ROC curves for various ConvNet architectural configurations

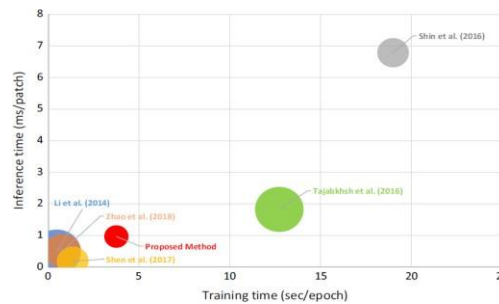


Fig. 6. Various ConvNets inference times compared to their training times and their testing errors.

The proposed ConvNet is compared to other ConvNets in terms of its training time, inference time, and testing error. Note that each experiment was carried out using a graphics processing unit (GPU) powered by an NVIDIA K40. The estimated time needed by the proposed ConvNet to finish predicting one nodule patch is 0.966 seconds. The suggested ConvNet requires 3.750 milliseconds for each training session to be completed. As can be shown in Figure 6, the training and inference times for the proposed ConvNet are significantly longer than those reported by Li et al. (2014), Zhao et al. (2018), or Shen et al. (2017). It is reasonable to anticipate that the suggested ConvNet will require more time to train or perform inference than the aforementioned three ConvNets due to the fact that it has a greater number of learnable parameters. In spite of this, the suggested ConvNet has an inference time that is only a fraction of a millisecond slower than the other three ConvNets, which is an extremely insignificant difference for actual clinical applications. The proposed ConvNet had the lowest testing error of all the ConvNets that were examined; this is the most important finding.

V. CONCLUSION

A unique Convolution Network architecture is described here for the categorization of lung nodules based on CT scans. In order to blend fine global structures from the early layers with sparse local structures from the later layers, the proposed ConvNet makes use of a multi-path feature extraction approach. This results in an accuracy improvement of 4% when compared to the previously proposed ConvNet, which does not utilise a multi-path feature extraction approach. When compared to the use of single-scale convolutional layers, the proposed ConvNet makes use of a multi-scale convolutional layer to extract features at different scales. This helps the network learn local structures more efficiently and results in an increase in classification accuracy of more than 2 percent. The suggested ConvNet delivers a 14 percent improvement in AUC when compared to an earlier unsupervised feature learning technique. The suggested ConvNet has the potential to produce up to 13 percent greater accuracy and 11 percent higher AUC when compared to earlier versions of ConvNets that were utilised in medical imaging.

REFERENCES

- [1] American Cancer Society. 2017. Retrieved January, 2019 from Cancer facts & figures 2017. <https://www.cancer.org/research/cancer-facts-statistics/all-cancer-facts-figures/cancer-facts-figures-2017.html>
- [2] Anthimopoulos, M., Christodoulidis, S., Ebner, L., Christe, A., & Mougiakakou, S. (2016). Lung pattern classification for interstitial lung diseases using a deep convolutional neural network. *IEEE Transactions on Medical Imaging*, 35(5), 1207–1216. <https://doi.org/10.1109/TMI.2016.2535865>.
- [3] Armato, S. G., Drukker, K., Li, F., Hadjiiski, L., Tourassi, G. D., Kirby, J. S., et al. (2016). LUNGx challenge for computerized lung nodule classification. *Journal of Medical Imaging*, 3, 3–9. <https://doi.org/10.1117/1.JMI.3.4.044506>.
- [4] Armato, S. G., Giger, M. L., Moran, C. J., Blackburn, J. T., Doi, K., & MacMahon, H. (1999). Computerized detection of pulmonary nodules on CT scans. *RadioGraphics*, 19(5), 1303–1311.
- [5] Bishop, C. M. (2006). *Pattern recognition and machine learning (information science and statistics)*. Secaucus, NJ: Springer.
- [6] Chen, J., & Shen, Y. (2017). The effect of kernel size of CNNs for lung nodule classification. In *2017 9th international conference on advanced infocomm technology (ICAIT)* (pp. 340–344). <https://doi.org/10.1109/ICAIT.2017.8388942>.
- [7] Ciompi, F., Jacobs, C., Scholten, E. T., Wille, M. M. W., de Jong, P. A., Prokop, M., et al. (2015). Bag-of-frequencies: A descriptor of pulmonary nodules in computed tomography images. *IEEE Transactions on Medical Imaging*, 34(4), 962–973. <https://doi.org/10.1109/TMI.2014.2371821>.
- [8] Deng, J., Dong, W., Socher, R., Li, L.J., Li, K., & Fei-Fei, L. (2009). ImageNet: A large-scale hierarchical image database. In: *2009 IEEE conference on computer vision and pattern recognition* (pp. 248–255).
- [9] Duchi, J., Hazan, E., & Singer, Y. (2011). Adaptive subgradient methods for online learning and stochastic optimization. *Journal of Machine Learning Research*, 12, 2121–2159.
- [10] Efron, B. (1993). *An introduction to the bootstrap*. Monographs on statistics and applied probability (Series) (Vol. 57). New York: Chapman & Hall.
- [11] Giger, M. L., Bae, K. T., & Macmahon, H. (1994). Computerized detection of pulmonary nodules in computed tomography images. *Investigative Radiology*, 29(4), 459–465.
- [12] He, K., Zhang, X., Ren, S., & Sun, J. (2015a). Deep residual learning for image recognition. CoRR arXiv:1512.03385.
- [13] He, K., Zhang, X., Ren, S., & Sun, J. (2015b). Deep residual learning for image recognition. CoRR arXiv:1512.03385.
- [14] Janowczyk, A., & Madabhushi, A. (2016). Deep learning for digital pathology image analysis: A comprehensive tutorial with selected use cases. *Journal of Pathology Informatics*, 7, 29. <https://doi.org/10.4103/2153-3539.186902>.
- [15] Jarrett, K., Kavukcuoglu, K., Ranzato, M., & LeCun, Y. (2009). What is the best multi-stage architecture for object recognition? In *2009 IEEE 12th international conference on computer vision* (pp. 2146–2153).
- [16] Jia, Y., Shelhamer, E., Donahue, J., Karayev, S., Long, J., Girshick, R., Guadarrama, S., & Darrell, T. (2014) Caffe: Convolutional architecture for fast feature embedding. arXiv preprint arXiv:1408.5093.
- [17] Kamiya, A., Murayama, S., Kamiya, H., Yamashiro, T., Oshiro, Y., & Tanaka, N. (2014). Kurtosis and skewness assessments of solid lung nodule density histograms: Differentiating malignant from benign nodules on CT. *Japanese Journal of Radiology*, 32(1), 14–21.
- [18] Kang, G., Liu, K., Hou, B., & Zhang, N. (2017). 3D multi-view convolutional neural networks for lung nodule classification. *PLOS ONE*, 12, 1–21. <https://doi.org/10.1371/journal.pone.0188290>.
- [19] Krizhevsky, A., Sutskever, I., & Hinton, G.E. (2012). ImageNet classification with deep convolutional neural networks. In *Proceedings of the 25th international conference on neural information processing systems— volume 1*, Curran Associates Inc., USA, NIPS'12 (pp. 1097–1105).
- [20] Levi, G., & Hassner, T. (2015). Age and gender classification using convolutional neural networks. In *2015 IEEE conference on computer vision and pattern recognition workshops (CVPRW)* (pp. 34–42). <https://doi.org/10.1109/CVPRW.2015.7301352>.
- [21] Li, C., Diao, Y., Ma, H., & Li, Y. (2008). A statistical PCA method for face recognition. In *2008 Second international symposium on intelligent information technology application* (vol. 3, pp. 376–380). <https://doi.org/10.1109/IITA.2008.71>.
- [22] Li, Q., Cai, W., Wang, X., Zhou, Y., Feng, D.D., &

- Chen, M. (2014). Medical image classification with convolutional neural network. In *2014 13th international conference on control automation robotics vision (ICARCV)* (pp. 844–848).
- [23] Li, W., Cao, P., Zhao, D., & Wang, J. (2016). Pulmonary nodule classification with deep convolutional neural networks on computed tomography images. *Computational and Mathematical Methods in Medicine*, 2016, 6215085. <https://doi.org/10.1155/2016/6215085>.
- [24] Mazurowski, M. A., Habas, P. A., Zurada, J. M., Lo, J. Y., Baker, J. A., & Tourassi, G. D. (2008). Training neural network classifiers for medical decision making: The effects of imbalanced datasets on classification performance. *Neural Networks*, 21(2), 427–436. (Advances in Neural Networks Research: IJCNN '07).
- [25] Monkam, P., Qi, S., Xu, M., Han, F., Zhao, X., & Qian, W. (2018). CNN models discriminating between pulmonary micro-nodules and non-nodules from CT images. *BioMedical Engineering OnLine*, 17(1), 96. <https://doi.org/10.1186/s12938-018-0529-x>.
- [26] Nishio, M., & Nagashima, C. (2017). Computer-aided diagnosis for lung cancer: Usefulness of nodule heterogeneity. *Academic Radiology*, 24(3), 328–336.
- [27] Kavuri, S., & Narne, S. (2020). Implementing effective SLO monitoring in high-volume data processing systems. *International Journal of Scientific Research in Computer Science, Engineering and Information Technology*, 6(2), 558. <http://ijsrceit.com>
- [28] Kavuri, S., & Narne, S. (2021). Improving performance of data extracts using window-based refresh strategies. *International Journal of Scientific Research in Science, Engineering and Technology*, 8(5), 359-377. <https://doi.org/10.32628/IJSRSET>
- [29] Narne, S. (2023). Predictive analytics in early disease detection: Applying deep learning to electronic health records. *African Journal of Biological Sciences*, 5(1), 70–101. <https://doi.org/10.48047/AFJBS.5.1.2023>.
- [30] Narne, S. (2022). AI-driven drug discovery: Accelerating the development of novel therapeutics. *International Journal on Recent and Innovation Trends in Computing and Communication*, 10(9), 196. <http://www.ijritcc.org>
- [31] Rinkesh Gajera , "Leveraging Procure for Improved Collaboration and Communication in Multi-Stakeholder Construction Projects", *International Journal of Scientific Research in Civil Engineering (IJSRCE)*, ISSN : 2456-6667, Volume 3, Issue 3, pp.47-51, May-June.2019
- [32] Rinkesh Gajera , "Integrating Power Bi with Project Control Systems: Enhancing Real-Time Cost Tracking and Visualization in Construction", *International Journal of Scientific Research in Civil Engineering (IJSRCE)*, ISSN : 2456-6667, Volume 7, Issue 5, pp.154-160, September-October.2023 URL : <https://ijsrce.com/IJSRCE123761>
- [33] Rinkesh Gajera, 2023. Developing a Hybrid Approach: Combining Traditional and Agile Project Management Methodologies in Construction Using Modern Software Tools, *ESP Journal of Engineering & Technology Advancements* 3(3): 78-83.
- [34] Paulraj, B. (2023). Enhancing Data Engineering Frameworks for Scalable Real-Time Marketing Solutions. *Integrated Journal for Research in Arts and Humanities*, 3(5), 309–315. <https://doi.org/10.55544/ijrah.3.5.34>
- [35] Balachandar, P. (2020). Title of the article. *International Journal of Scientific Research in Science, Engineering and Technology*, 7(5), 401-410. <https://doi.org/10.32628/IJSRSET23103132>
- [36] Paulraj, B. (2022). Building Resilient Data Ingestion Pipelines for Third-Party Vendor Data Integration. *Journal for Research in Applied Sciences and Biotechnology*, 1(1), 97–104. <https://doi.org/10.55544/jrasb.1.1.14>
- [37] Paulraj, B. (2022). The Role of Data Engineering in Facilitating Ps5 Launch Success: A Case Study. *International Journal on Recent and Innovation Trends in Computing and Communication*, 10(11), 219–225. <https://doi.org/10.17762/ijritcc.v10i11.11145>
- [38] Paulraj, B. (2019). Automating resource management in big data environments to reduce operational costs. *Tuijin Jishu/Journal of Propulsion Technology*, 40(1). <https://doi.org/10.52783/tjpt.v40.i1.7905>
- [39] Balachandar Paulraj. (2021). Implementing Feature and Metric Stores for Machine Learning Models in the Gaming Industry. *European Economic Letters (EEL)*, 11(1). Retrieved from <https://www.eelet.org.uk/index.php/journal/article/view/1924>
- [40] Bhatt, S. (2020). Leveraging AWS tools for high availability and disaster recovery in SAP applications. *International Journal of Scientific Research in Science, Engineering and Technology*, 7(2), 482. <https://doi.org/10.32628/IJSRSET2072122>
- [41] Bhatt, S. (2023). A comprehensive guide to SAP data center migrations: Techniques and case studies. *International Journal of Scientific Research in Science, Engineering and Technology*, 10(6), 346. <https://doi.org/10.32628/IJSRSET2310630>
- [42] Kavuri, S., & Narne, S. (2020). Implementing effective SLO monitoring in high-volume data processing systems. *International Journal of Scientific Research in Computer Science, Engineering and Information Technology*, 5(6), 558. <https://doi.org/10.32628/CSEIT206479>
- [43] Kavuri, S., & Narne, S. (2023). Improving performance of data extracts using window-based refresh strategies. *International Journal of Scientific Research in Science, Engineering and Technology*, 10(6), 359. <https://doi.org/10.32628/IJSRSET2310631>

- [44] Swethasri Kavuri, " Advanced Debugging Techniques for Multi-Processor Communication in 5G Systems, International Journal of Scientific Research in Computer Science, Engineering and Information Technology(IJSRCSEIT), ISSN : 2456-3307, Volume 9, Issue 5, pp.360-384, September-October-2023. Available at doi : <https://doi.org/10.32628/CSEIT239071>
- [45] Mehra, A. (2023). Strategies for scaling EdTech startups in emerging markets. *International Journal of Communication Networks and Information Security*, 15(1), 259–274. <https://ijcnis.org>
- [46] Mehra, A. (2021). The impact of public-private partnerships on global educational platforms. *Journal of Informatics Education and Research*, 1(3), 9–28. <http://jier.or>
- [47] Ankur Mehra. (2019). Driving Growth in the Creator Economy through Strategic Content Partnerships. *International Journal for Research Publication and Seminar*, 10(2), 118–135. <https://doi.org/10.36676/jrps.v10.i2.1519>
- [48] Mehra, A. (2023). Leveraging Data-Driven Insights to Enhance Market Share in the Media Industry. *Journal for Research in Applied Sciences and Biotechnology*, 2(3), 291–304. <https://doi.org/10.55544/jrasb.2.3.37>
- [49] Ankur Mehra. (2022). Effective Team Management Strategies in Global Organizations. *Universal Research Reports*, 9(4), 409–425. <https://doi.org/10.36676/urr.v9.i4.1363>
- [50] Mehra, A. (2023). Innovation in brand collaborations for digital media platforms. *IJFANS International Journal of Food and Nutritional Sciences*, 12(6), 231. <https://doi.org/10.XXXX/xxxxx>
- [51] Ankur Mehra. (2022). Effective Team Management Strategies in Global Organizations. *Universal Research Reports*, 9(4), 409–425. <https://doi.org/10.36676/urr.v9.i4.1363>
- [52] Mehra, A. (2023). Leveraging Data-Driven Insights to Enhance Market Share in the Media Industry. *Journal for Research in Applied Sciences and Biotechnology*, 2(3), 291–304. <https://doi.org/10.55544/jrasb.2.3.3>
- [53] Ankur Mehra. (2022). Effective Team Management Strategies in Global Organizations. *Universal Research Reports*, 9(4), 409–425. <https://doi.org/10.36676/urr.v9.i4.1363>
- [54] Ankur Mehra. (2022). The Role of Strategic Alliances in the Growth of the Creator Economy. *European Economic Letters (EEL)*, 12(1). Retrieved from <https://www.eelet.org.uk/index.php/journal/article/view/1925>
- [55] V. K. R. Voddi, "Bike Sharing: An In-Depth Analysis on the Citi Bike Sharing System of Jersey City, NJ," 2023 6th International Conference on Recent Trends in Advance Computing (ICRTAC), Chennai, India, 2023, pp. 796-804, doi: 10.1109/ICRTAC59277.2023.10480792
- [56] Bizel, G., Parmar, C., Singh, K., Teegala, S., & Voddi, V. K. R. (2021). Cultural health moments: A search analysis during times of heightened awareness to identify potential interception points with digital health consumers. *Journal of Economics and Management Sciences*, 4(4), 35. <https://doi.org/10.30560/jems.v4n4p35>
- [57] Reddy, V. V. K., & Reddy, K. K. (2021). COVID-19 case predictions: Anticipating future outbreaks through data. *NeuroQuantology*, 19(7), 461–466. https://www.neuroquantology.com/open-access/COVID-19+Case+Predictions%253A+Anticipating+Future+Outbreaks+Through+Data_14333/?download=true
- [58] Santhosh Palavesh. (2019). The Role of Open Innovation and Crowdsourcing in Generating New Business Ideas and Concepts. *International Journal for Research Publication and Seminar*, 10(4), 137–147. <https://doi.org/10.36676/jrps.v10.i4.1456>
- [59] Santosh Palavesh. (2021). Developing Business Concepts for Underserved Markets: Identifying and Addressing Unmet Needs in Niche or Emerging Markets. *Innovative Research Thoughts*, 7(3), 76–89. <https://doi.org/10.36676/irt.v7.i3.1437>
- [60] Palavesh, S. (2021). Co-Creating Business Concepts with Customers: Approaches to the Use of Customers in New Product/Service Development. *Integrated Journal for Research in Arts and Humanities*, 1(1), 54–66. <https://doi.org/10.55544/ijrah.1.1.9>
- [61] Santhosh Palavesh. (2022). Entrepreneurial Opportunities in the Circular Economy: Defining Business Concepts for Closed-Loop Systems and Resource Efficiency. *European Economic Letters (EEL)*, 12(2), 189–204. <https://doi.org/10.52783/eel.v12i2.1785>
- [62] Santhosh Palavesh. (2022). The Impact of Emerging Technologies (e.g., AI, Blockchain, IoT) On Conceptualizing and Delivering new Business Offerings. *International Journal on Recent and Innovation Trends in Computing and Communication*, 10(9), 160–173. Retrieved from <https://www.ijritcc.org/index.php/ijritcc/article/view/10955>
- [63] Santhosh Palavesh. (2021). Business Model Innovation: Strategies for Creating and Capturing Value Through Novel Business Concepts. *European Economic Letters (EEL)*, 11(1). <https://doi.org/10.52783/eel.v11i1.1784>
- [64] Santhosh Palavesh. (2023). Leveraging Lean Startup Principles: Developing And Testing Minimum Viable Products (Mvps) In New Business Ventures. *Educational Administration: Theory and Practice*, 29(4), 2418–2424. <https://doi.org/10.53555/kuvey.v29i4.7141>
- [65] Palavesh, S. (2023). The role of design thinking in conceptualizing and validating new business ideas. *Journal of Informatics Education and Research*, 3(2), 3057.
- [66] Vijaya Venkata Sri Rama Bhaskar, Akhil Mittal, Santosh Palavesh, Krishnateja Shiva, Pradeep Etikani. (2020). Regulating AI in Fintech: Balancing Innovation with Consumer Protection. *European Economic Letters (EEL)*, 10(1). <https://doi.org/10.52783/eel.v10i1.1810>

- [67] Sri Sai Subramanyam Challa. (2023). Regulatory Intelligence: Leveraging Data Analytics for Regulatory Decision-Making. *International Journal on Recent and Innovation Trends in Computing and Communication*, 11(11), 1426–1434. Retrieved from <https://www.ijritcc.org/index.php/ijritcc/article/view/10893>
- [68] Challa, S. S. S. (2020). Assessing the regulatory implications of personalized medicine and the use of biomarkers in drug development and approval. *European Chemical Bulletin*, 9(4), 134-146.
- [69] D.O.I10.53555/ecb.v9:i4.17671
- [70] EVALUATING THE EFFECTIVENESS OF RISK-BASED APPROACHES IN STREAMLINING THE REGULATORY APPROVAL PROCESS FOR NOVEL THERAPIES. (2021). *Journal of Population Therapeutics and Clinical Pharmacology*, 28(2), 436-448. <https://doi.org/10.53555/jptcp.v28i2.7421>
- [71] Challa, S. S. S., Tilala, M., Chawda, A. D., & Benke, A. P. (2019). Investigating the use of natural language processing (NLP) techniques in automating the extraction of regulatory requirements from unstructured data sources. *Annals of Pharma Research*, 7(5), 380-387.
- [72] Ashok Choppadandi. (2022). Exploring the Potential of Blockchain Technology in Enhancing Supply Chain Transparency and Compliance with Good Distribution Practices (GDP). *International Journal on Recent and Innovation Trends in Computing and Communication*, 10(12), 336–343. Retrieved from <https://www.ijritcc.org/index.php/ijritcc/article/view/10981>
- [73] Challa, S. S. S., Chawda, A. D., Benke, A. P., & Tilala, M. (2020). Evaluating the use of machine learning algorithms in predicting drug-drug interactions and adverse events during the drug development process. *NeuroQuantology*, 18(12), 176-186. <https://doi.org/10.48047/nq.2020.18.12.NQ20252>
- [74] Challa, S. S. S., Tilala, M., Chawda, A. D., & Benke, A. P. (2023). Investigating the impact of AI-assisted drug discovery on the efficiency and cost-effectiveness of pharmaceutical R&D. *Journal of Cardiovascular Disease Research*, 14(10), 2244.
- [75] Challa, S. S. S., Tilala, M., Chawda, A. D., & Benke, A. P. (2022). Quality Management Systems in Regulatory Affairs: Implementation Challenges and Solutions. *Journal for Research in Applied Sciences and Biotechnology*, 1(3), 278–284. <https://doi.org/10.55544/jrasb.1.3.36>
- [76] Ranjit Kumar Gupta, Sagar Shukla, Anaswara Thekkan Rajan, & Sneha Aravind. (2022). Strategies for Effective Product Roadmap Development and Execution in Data Analytics Platforms. *International Journal for Research Publication and Seminar*, 13(1), 328–342. Retrieved from <https://jrps.shodhsagar.com/index.php/j/article/view/1515>
- [77] Ranjit Kumar Gupta, Sagar Shukla, Anaswara Thekkan Rajan, & Sneha Aravind. (2022). Leveraging Data Analytics to Improve User Satisfaction for Key Personas: The Impact of Feedback Loops. *International Journal for Research Publication and Seminar*, 11(4), 242–252. <https://doi.org/10.36676/jrps.v11.i4.1489>
- [78] Ranjit Kumar Gupta, Sagar Shukla, Anaswara Thekkan Rajan, Sneha Aravind, 2021. "Utilizing Splunk for Proactive Issue Resolution in Full Stack Development Projects" *ESP Journal of Engineering & Technology Advancements* 1(1): 57-64.
- [79] Sagar Shukla, Anaswara Thekkan Rajan, Sneha Aravind, Ranjit Kumar Gupta, Santosh Palavesh. (2023). Monetizing API Suites: Best Practices for Establishing Data Partnerships and Iterating on Customer Feedback. *European Economic Letters (EEL)*, 13(5), 2040–2053. <https://doi.org/10.52783/eel.v13i5.1798>
- [80] Sagar Shukla. (2021). Integrating Data Analytics Platforms with Machine Learning Workflows: Enhancing Predictive Capability and Revenue Growth. *International Journal on Recent and Innovation Trends in Computing and Communication*, 9(12), 63–74. Retrieved from <https://ijritcc.org/index.php/ijritcc/article/view/11119>
- [81] Shukla, S., Thekkan Rajan, A., Aravind, S., & Gupta, R. K. (2023). Implementing scalable big-data tech stacks in pre-seed start-ups: Challenges and strategies for realizing strategic vision. *International Journal of Communication Networks and Information Security*, 15(1).
- [82] Sneha Aravind. (2021). Integrating REST APIs in Single Page Applications using Angular and TypeScript. *International Journal of Intelligent Systems and Applications in Engineering*, 9(2), 81 –. Retrieved from <https://ijisae.org/index.php/IJISAE/article/view/6829>
- [83] Aravind, S., Cherukuri, H., Gupta, R. K., Shukla, S., & Rajan, A. T. (2022). The role of HTML5 and CSS3 in creating optimized graphic prototype websites and application interfaces. *NeuroQuantology*, 20(12), 4522-4536. <https://doi.org/10.48047/NQ.2022.20.12.NQ77775>
- [84] Nikhil Singla. (2023). Assessing the Performance and Cost-Efficiency of Serverless Computing for Deploying and Scaling AI and ML Workloads in the Cloud. *International Journal of Intelligent Systems and Applications in Engineering*, 11(5s), 618–630. Retrieved from <https://ijisae.org/index.php/IJISAE/article/view/6730>
- [85] Rishabh Rajesh Shanbhag, Rajkumar Balasubramanian, Ugandhar Dasi, Nikhil Singla, & Siddhant Benadikar. (2022). Case Studies and Best Practices in Cloud-Based Big Data Analytics for Process Control. *International Journal for Research Publication and Seminar*, 13(5), 292–311. <https://doi.org/10.36676/jrps.v13.i5.1462>
- [86] Siddhant Benadikar. (2021). Developing a Scalable and Efficient Cloud-Based Framework for Distributed Machine Learning. *International Journal of Intelligent Systems and Applications in Engineering*, 9(4), 288 –. Retrieved from <https://ijisae.org/index.php/IJISAE/article/view/6761>

- [87] Siddhant Benadikar. (2021). Evaluating the Effectiveness of Cloud-Based AI and ML Techniques for Personalized Healthcare and Remote Patient Monitoring. *International Journal on Recent and Innovation Trends in Computing and Communication*, 9(10), 03–16. Retrieved from <https://www.ijritcc.org/index.php/ijritcc/article/view/11036>
- [88] Rishabh Rajesh Shanbhag. (2023). Exploring the Use of Cloud-Based AI and ML for Real-Time Anomaly Detection and Predictive Maintenance in Industrial IoT Systems. *International Journal of Intelligent Systems and Applications in Engineering*, 11(4), 925 –. Retrieved from <https://ijisae.org/index.php/IJISAE/article/view/6762>
- [89] Nikhil Singla. (2023). Assessing the Performance and Cost-Efficiency of Serverless Computing for Deploying and Scaling AI and ML Workloads in the Cloud. *International Journal of Intelligent Systems and Applications in Engineering*, 11(5s), 618–630. Retrieved from <https://ijisae.org/index.php/IJISAE/article/view/673>
- [90] Nikhil Singla. (2023). Assessing the Performance and Cost-Efficiency of Serverless Computing for Deploying and Scaling AI and ML Workloads in the Cloud. *International Journal of Intelligent Systems and Applications in Engineering*, 11(5s), 618–630. Retrieved from <https://ijisae.org/index.php/IJISAE/article/view/6730>
- [91] Challa, S. S., Tilala, M., Chawda, A. D., & Benke, A. P. (2019). Investigating the use of natural language processing (NLP) techniques in automating the extraction of regulatory requirements from unstructured data sources. *Annals of PharmaResearch*, 7(5), 380-387.
- [92] Ritesh Chaturvedi. (2023). Robotic Process Automation (RPA) in Healthcare: Transforming Revenue Cycle Operations. *International Journal on Recent and Innovation Trends in Computing and Communication*, 11(6), 652–658. Retrieved from <https://www.ijritcc.org/index.php/ijritcc/article/view/11045>
- [93] Chaturvedi, R., & Sharma, S. (2022). Assessing the Long-Term Benefits of Automated Remittance in Large Healthcare Networks. *Journal for Research in Applied Sciences and Biotechnology*, 1(5), 219–224. <https://doi.org/10.55544/jrasb.1.5.25>
- [94] Chaturvedi, R., & Sharma, S. (2022). Enhancing healthcare staffing efficiency with AI-powered demand management tools. *Eurasian Chemical Bulletin*, 11(Regular Issue 1), 675-681. <https://doi.org/10.5281/zenodo.13268360>
- [95] Dr. Saloni Sharma, & Ritesh Chaturvedi. (2017). Blockchain Technology in Healthcare Billing: Enhancing Transparency and Security. *International Journal for Research Publication and Seminar*, 10(2), 106–117. Retrieved from <https://jrps.shodhsagar.com/index.php/j/article/view/1475>
- [96] Dr. Saloni Sharma, & Ritesh Chaturvedi. (2017). Blockchain Technology in Healthcare Billing: Enhancing Transparency and Security. *International Journal for Research Publication and Seminar*, 10(2), 106–117. Retrieved from <https://jrps.shodhsagar.com/index.php/j/article/view/1475>
- [97] Saloni Sharma. (2020). AI-Driven Predictive Modelling for Early Disease Detection and Prevention. *International Journal on Recent and Innovation Trends in Computing and Communication*, 8(12), 27–36. Retrieved from <https://www.ijritcc.org/index.php/ijritcc/article/view/11046>
- [98] Chaturvedi, R., & Sharma, S. (2022). Assessing the Long-Term Benefits of Automated Remittance in Large Healthcare Networks. *Journal for Research in Applied Sciences and Biotechnology*, 1(5), 219–224. <https://doi.org/10.55544/jrasb.1.5.25>
- [99] Pavan Ogeti, Narendra Sharad Fadnavis, Gireesh Bhaulal Patil, Uday Krishna Padyana, Hitesh Premshankar Rai. (2022). Blockchain Technology for Secure and Transparent Financial Transactions. *European Economic Letters (EEL)*, 12(2), 180–188. Retrieved from <https://www.eelet.org.uk/index.php/journal/article/view/1283>
- [100] Ogeti, P., Fadnavis, N. S., Patil, G. B., Padyana, U. K., & Rai, H. P. (2023). Edge computing vs. cloud computing: A comparative analysis of their roles and benefits. *Volume 20, No. 3*, 214-226.
- [101] Fadnavis, N. S., Patil, G. B., Padyana, U. K., Rai, H. P., & Ogeti, P. (2020). Machine learning applications in climate modeling and weather forecasting. *NeuroQuantology*, 18(6), 135-145. <https://doi.org/10.48047/nq.2020.18.6.NQ20194>
- [102] Narendra Sharad Fadnavis. (2021). Optimizing Scalability and Performance in Cloud Services: Strategies and Solutions. *International Journal on Recent and Innovation Trends in Computing and Communication*, 9(2), 14–21. Retrieved from <https://www.ijritcc.org/index.php/ijritcc/article/view/10889>
- [103] Gireesh Bhaulal Patil. (2022). AI-Driven Cloud Services: Enhancing Efficiency and Scalability in Modern Enterprises. *International Journal of Intelligent Systems and Applications in Engineering*, 10(1), 153–162. Retrieved from <https://ijisae.org/index.php/IJISAE/article/view/6728>
- [104] Padyana, U. K., Rai, H. P., Ogeti, P., Fadnavis, N. S., & Patil, G. B. (2023). AI and Machine Learning in Cloud-Based Internet of Things (IoT) Solutions: A Comprehensive Review and Analysis. *Integrated Journal for Research in Arts and Humanities*, 3(3), 121–132. <https://doi.org/10.55544/ijrah.3.3.20>
- [105] Patil, G. B., Padyana, U. K., Rai, H. P., Ogeti, P., & Fadnavis, N. S. (2021). Personalized marketing strategies through machine learning: Enhancing customer engagement. *Journal of Informatics Education and Research*, 1(1), 9. <http://jier.org>
- [106] Padyana, U. K., Rai, H. P., Ogeti, P., Fadnavis, N. S., & Patil, G. B. (2023). AI and Machine Learning in Cloud-Based Internet of Things (IoT) Solutions: A Comprehensive Review and Analysis. *Integrated Journal for Research in Arts and Humanities*, 3(3), 121–132. <https://doi.org/10.55544/ijrah.3.3.20>

- [107] Krishnateja Shiva. (2022). Leveraging Cloud Resource for Hyperparameter Tuning in Deep Learning Models. *International Journal on Recent and Innovation Trends in Computing and Communication*, 10(2), 30–35. Retrieved from <https://www.ijritcc.org/index.php/ijritcc/article/view/10980>
- [108] Shiva, K., Etikani, P., Bhaskar, V. V. S. R., Palavesh, S., & Dave, A. (2022). The rise of robo-advisors: AI-powered investment management for everyone. *Journal of Namibian Studies*, 31, 201-214.
- [109] Etikani, P., Bhaskar, V. V. S. R., Nuguri, S., Saoji, R., & Shiva, K. (2023). Automating machine learning workflows with cloud-based pipelines. *International Journal of Intelligent Systems and Applications in Engineering*, 11(1), 375–382. <https://doi.org/10.48047/ijisae.2023.11.1.375>
- [110] Etikani, P., Bhaskar, V. V. S. R., Palavesh, S., Saoji, R., & Shiva, K. (2023). AI-powered algorithmic trading strategies in the stock market. *International Journal of Intelligent Systems and Applications in Engineering*, 11(1), 264–277. https://doi.org/10.1234/ijisdip.org_2023-Volume-11-Issue-1_Page_264-277
- [111] Bhaskar, V. V. S. R., Etikani, P., Shiva, K., Choppadandi, A., & Dave, A. (2019). Building explainable AI systems with federated learning on the cloud. *Journal of Cloud Computing and Artificial Intelligence*, 16(1), 1–14.
- [112] Ogeti, P., Fadnavis, N. S., Patil, G. B., Padyana, U. K., & Rai, H. P. (2022). Blockchain technology for secure and transparent financial transactions. *European Economic Letters*, 12(2), 180-192. <http://eelet.org.uk>
- [113] Vijaya Venkata Sri Rama Bhaskar, Akhil Mittal, Santosh Palavesh, Krishnateja Shiva, Pradeep Etikani. (2020). Regulating AI in Fintech: Balancing Innovation with Consumer Protection. *European Economic Letters (EEL)*, 10(1). <https://doi.org/10.52783/eel.v10i1.1810>
- [114] Dave, A., Shiva, K., Etikani, P., Bhaskar, V. V. S. R., & Choppadandi, A. (2022). Serverless AI: Democratizing machine learning with cloud functions. *Journal of Informatics Education and Research*, 2(1), 22-35. <http://jier.org>
- [115] Dave, A., Etikani, P., Bhaskar, V. V. S. R., & Shiva, K. (2020). Biometric authentication for secure mobile payments. *Journal of Mobile Technology and Security*, 41(3), 245-259.
- [116] Saoji, R., Nuguri, S., Shiva, K., Etikani, P., & Bhaskar, V. V. S. R. (2021). Adaptive AI-based deep learning models for dynamic control in software-defined networks. *International Journal of Electrical and Electronics Engineering (IJEEE)*, 10(1), 89–100. ISSN (P): 2278–9944; ISSN (E): 2278–9952
- [117] Narendra Sharad Fadnavis. (2021). Optimizing Scalability and Performance in Cloud Services: Strategies and Solutions. *International Journal on Recent and Innovation Trends in Computing and Communication*, 9(2), 14–21. Retrieved from <https://www.ijritcc.org/index.php/ijritcc/article/view/10889>
- [118] Joel lopes, Arth Dave, Hemanth Swamy, Varun Nakra, & Akshay Agarwal. (2023). Machine Learning Techniques And Predictive Modeling For Retail Inventory Management Systems. *Educational Administration: Theory and Practice*, 29(4), 698–706. <https://doi.org/10.53555/kuey.v29i4.5645>
- [119] Nitin Prasad. (2022). Security Challenges and Solutions in Cloud-Based Artificial Intelligence and Machine Learning Systems. *International Journal on Recent and Innovation Trends in Computing and Communication*, 10(12), 286–292. Retrieved from <https://www.ijritcc.org/index.php/ijritcc/article/view/10750>
- [120] Prasad, N., Narukulla, N., Hajari, V. R., Paripati, L., & Shah, J. (2020). AI-driven data governance framework for cloud-based data analytics. *Volume 17, (2)*, 1551-1561.
- [121] Jigar Shah , Joel lopes , Nitin Prasad , Narendra Narukulla , Venudhar Rao Hajari , Lohith Paripati. (2023). Optimizing Resource Allocation And Scalability In Cloud-Based Machine Learning Models. *Migration Letters*, 20(S12), 1823–1832. Retrieved from <https://migrationletters.com/index.php/ml/article/view/10652>
- [122] Big Data Analytics using Machine Learning Techniques on Cloud Platforms. (2019). *International Journal of Business Management and Visuals*, ISSN: 3006-2705, 2(2), 54-58. <https://ijbmv.com/index.php/home/article/view/76>
- [123] Shah, J., Narukulla, N., Hajari, V. R., Paripati, L., & Prasad, N. (2021). Scalable machine learning infrastructure on cloud for large-scale data processing. *Tuijin Jishu/Journal of Propulsion Technology*, 42(2), 45-53.
- [124] Narukulla, N., Lopes, J., Hajari, V. R., Prasad, N., & Swamy, H. (2021). Real-time data processing and predictive analytics using cloud-based machine learning. *Tuijin Jishu/Journal of Propulsion Technology*, 42(4), 91-102
- [125] Secure Federated Learning Framework for Distributed Ai Model Training in Cloud Environments. (2019). *International Journal of Open Publication and Exploration*, ISSN: 3006-2853, 7(1), 31-39. <https://ijope.com/index.php/home/article/view/145>
- [126] Paripati, L., Prasad, N., Shah, J., Narukulla, N., & Hajari, V. R. (2021). Blockchain-enabled data analytics for ensuring data integrity and trust in AI systems. *International Journal of Computer Science and Engineering (IJCSE)*, 10(2), 27–38. ISSN (P): 2278–9960; ISSN (E): 2278–9979.
- [127] Hajari, V. R., Prasad, N., Narukulla, N., Chaturvedi, R., & Sharma, S. (2023). Validation techniques for AI/ML components in medical diagnostic devices. *NeuroQuantology*, 21(4), 306-312. <https://doi.org/10.48047/NQ.2023.21.4.NQ23029>
- [128] Hajari, V. R., Chaturvedi, R., Sharma, S., Tilala, M., Chawda, A. D., & Benke, A. P. (2023). Interoperability testing strategies for medical IoT devices. *Tuijin Jishu/Journal of Propulsion Technology*, 44(1), 258.
- [129] DOI: 10.36227/techrxiv.171340711.17793838/v1
- [130] P. V., V. R., & Chidambaranathan, S. (2023). Polyp segmentation using UNet and ENet. In *Proceedings of the 6th*

International Conference on Recent Trends in Advance Computing (ICRTAC) (pp. 516-522). Chennai, India. <https://doi.org/10.1109/ICRTAC59277.2023.10480851>

[131] Athisayaraj, A. A., Sathiyarayanan, M., Khan, S., Selvi, A. S., Briskilla, M. I., Jemima, P. P., Chidambaranathan, S., Sithik, A. S., Sivasankari, K., & Duraipandian, K. (2023). Smart thermal-cooler umbrella (UK Design No. 6329357).

[132] Challa, S. S. S., Chawda, A. D., Benke, A. P., & Tilala, M. (2023). Regulatory intelligence: Leveraging data analytics for regulatory decision-making. *International Journal on Recent and Innovation Trends in Computing and Communication*, 11, 10.

[133] Challa, S. S. S., Tilala, M., Chawda, A. D., & Benke, A. P. (2019). Investigating the use of natural language processing (NLP) techniques in automating the extraction of regulatory requirements from unstructured data sources. *Annals of Pharma Research*, 7(5),

[134] Challa, S. S. S., Tilala, M., Chawda, A. D., & Benke, A. P. (2021). Navigating regulatory requirements for complex dosage forms: Insights from topical, parenteral, and ophthalmic products. *NeuroQuantology*, 19(12), 15.

[135] Challa, S. S. S., Tilala, M., Chawda, A. D., & Benke, A. P. (2022). Quality management systems in regulatory affairs: Implementation challenges and solutions. *Journal for Research in Applied Sciences*

[136] Saoji, R., Nuguri, S., Shiva, K., Etikani, P., & Bhaskar, V. V. S. R. (2019). Secure federated learning framework for distributed AI model training in cloud environments. *International Journal of Open Publication and Exploration (IJOPE)*, 7(1), 31. Available online at <https://ijope.com>.

[137] Savita Nuguri, Rahul Saoji, Krishnateja Shiva, Pradeep Etikani, & Vijaya Venkata Sri Rama Bhaskar. (2021). OPTIMIZING AI MODEL DEPLOYMENT IN CLOUD ENVIRONMENTS: CHALLENGES AND SOLUTIONS. *International Journal for Research Publication and Seminar*, 12(2), 159–168. <https://doi.org/10.36676/jrps.v12.i2.1461>

[138] Kaur, J., Choppadandi, A., Chenchala, P. K., Nuguri, S., & Saoji, R. (2022). Machine learning-driven IoT systems for precision agriculture: Enhancing decision-making and efficiency. *Webology*, 19(6), 2158. Retrieved from <http://www.webology.org>.

[139] Lohith Paripati, Varun Nakra, Pandi Kirupa Gopalakrishna Pandian, Rahul Saoji, Bhanu Devaguptapu. (2023). Exploring the Potential of Learning in Credit Scoring Models for Alternative Lending Platforms. *European Economic Letters (EEL)*, 13(4), 1331–1241. <https://doi.org/10.52783/eel.v13i4.1799>

[140] Etikani, P., Bhaskar, V. V. S. R., Nuguri, S., Saoji, R., & Shiva, K. (2023). Automating machine learning workflows with cloud-based pipelines. *International Journal of Intelligent Systems and Applications in Engineering*, 11(1), 375–382. <https://doi.org/10.48047/ijisae.2023.11.1.37>

[141] Etikani, P., Bhaskar, V. V. S. R., Palavesh, S., Saoji, R., & Shiva, K. (2023). AI-powered algorithmic trading strategies in the stock market. *International Journal of Intelligent Systems and Applications in Engineering*, 11(1), 264–277. https://doi.org/10.1234/ijsdip.org_2023-Volume-11-Issue-1_Page_264-277.

[142] Saoji, R., Nuguri, S., Shiva, K., Etikani, P., & Bhaskar, V. V. S. R. (2021). Adaptive AI-based deep learning models for dynamic control in software-defined networks. *International Journal of Electrical and Electronics Engineering (IJEEE)*, 10(1), 89–100. ISSN (P): 2278–9944; ISSN (E): 2278–9952

[143] Varun Nakra, Arth Dave, Savitha Nuguri, Pradeep Kumar Chenchala, Akshay Agarwal. (2023). Robo-Advisors in Wealth Management: Exploring the Role of AI and ML in Financial Planning. *European Economic Letters (EEL)*, 13(5), 2028–2039. Retrieved from <https://www.eelet.org.uk/index.php/journal/article/view/1514>

[144] Pradeep Kumar Chenchala. (2023). Social Media Sentiment Analysis for Enhancing Demand Forecasting Models Using Machine Learning Models. *International Journal on Recent and Innovation Trends in Computing and Communication*, 11(6), 595–601. Retrieved from <https://www.ijritcc.org/index.php/ijritcc/article/view/10762>

[145] Varun Nakra. (2023). Enhancing Software Project Management and Task Allocation with AI and Machine Learning. *International Journal on Recent and Innovation Trends in Computing and Communication*, 11(11), 1171–1178. Retrieved from <https://www.ijritcc.org/index.php/ijritcc/article/view/10684>

[146] Lindiawati, Indrianawati, Astuti, S. W., Nuguri, S., Saoji, R., Devaguptapu, B., & Prasad, N. (2023). The Information Quality of Corporate Social Responsibility in Leveraging Banks CSR Reputation: A Study of Indonesian Banks. *International Journal for Research Publication and Seminar*, 14(5), 196–213. <https://doi.org/10.36676/jrps.v14.i5.1441>